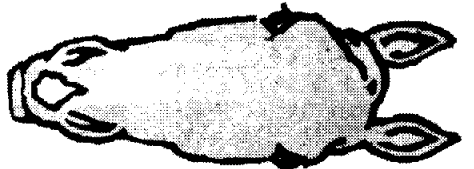
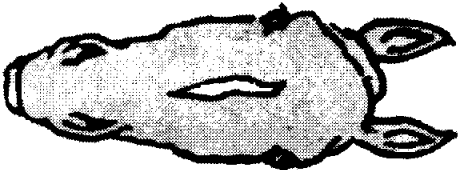


A



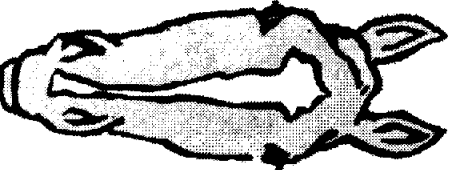
B



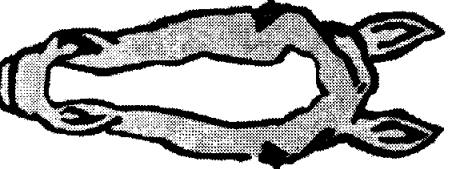
C



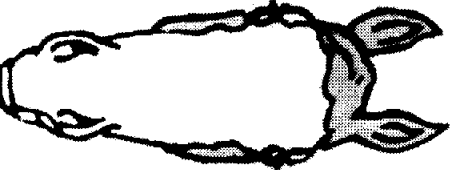
D



E



F



G

A - Irregular Star

B - Snip between nostrils ending on upper lip

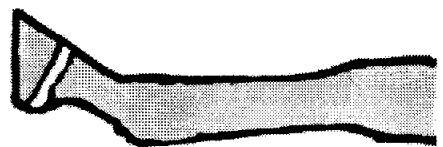
C - Narrow stripe starting between eyes and ending on bridge of nose

D - Star and connected narrow stripe ending in center of face

E - Star and connected stripe narrowing on bridge of nose

F - Blaze

G - Bald face



CORONET



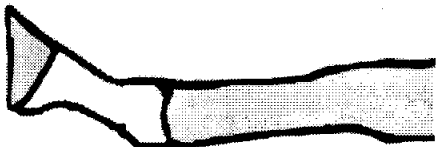
HALF PASTERN



PASTERN



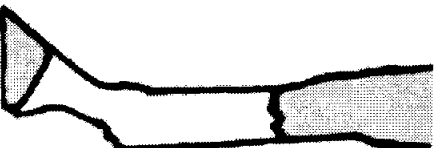
PASTERN AND PART OF ANKLE



SOCK



HALF STOCKING



3/4 STOCKING



FULL STOCKING



HEEL



OUTSIDE OF HEEL